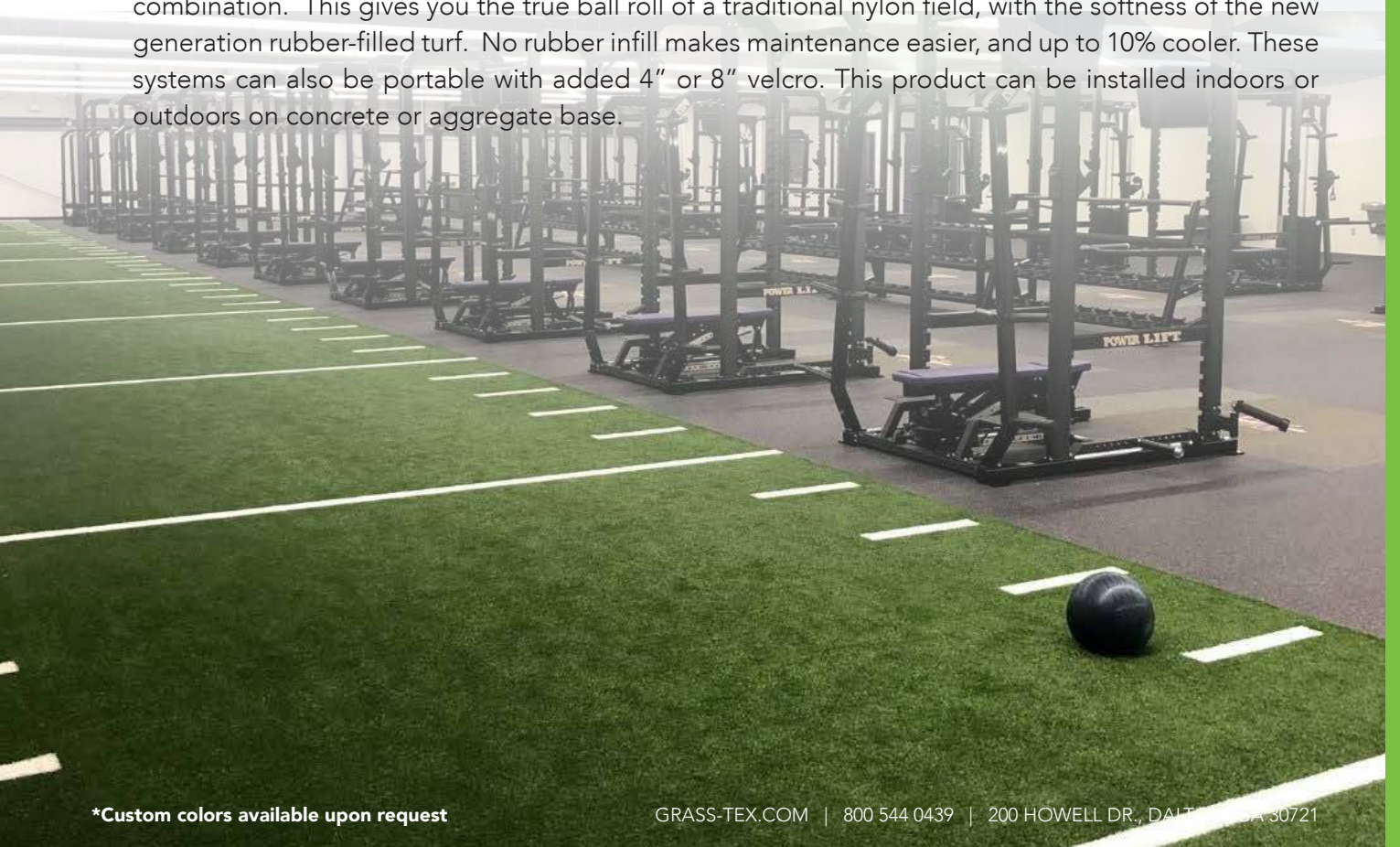


FEATURES AND BENEFITS

- Perfect for training
- High performance quality
- Reacts naturally
- Improved durability and safety
- Helps create multipurpose facilities
- Virtually maintenance free
- Clean and can be cleaned easily
- Consistent performance over time and use

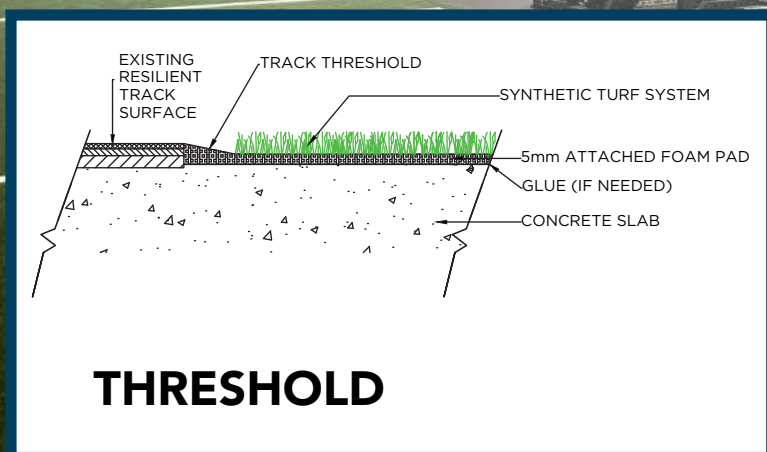
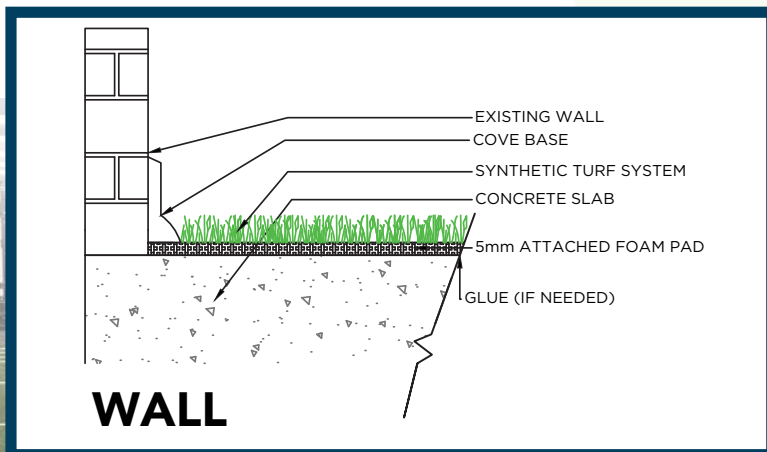
APPLICATION

This non-rubber infilled turf has all the advantages of previous generations and perform even higher in wear and resistance tests. The blend of nylon and polyethylene is an almost perfect 50/50 combination. This gives you the true ball roll of a traditional nylon field, with the softness of the new generation rubber-filled turf. No rubber infill makes maintenance easier, and up to 10% cooler. These systems can also be portable with added 4" or 8" velcro. This product can be installed indoors or outdoors on concrete or aggregate base.



ARENA PRO

PROPERTY	DESCRIPTION
Primary/Stalk Yarn Polymer	52% Polyethylene
Secondary/Thatch Yarn Polymer	48% Nylon
Yarn Cross Section	Polyethylene Slit-Film/Texturized Nylon
Standard Colors	Field Green, White
UV Stabilized	Yes
Fabric Construction	Tufted
Primary Backing	Dual layered woven polypropylene
Coating Type(s)	SilverBack™ Polyurethane or 5mm Polyurethane Foam w/fleece
Perforations	Custom only
Polyethylene (Slit-Film) Yarn Denier/Ends	5040/1
Texturized Nylon Denier/Ends(Thatch)	4400/8
Recommended Infill	N/A
Pile Height	7/8"
Total Weight	170 oz.
Fabric Width	12 Ft.



SYNTHETIC TURF SYSTEMS